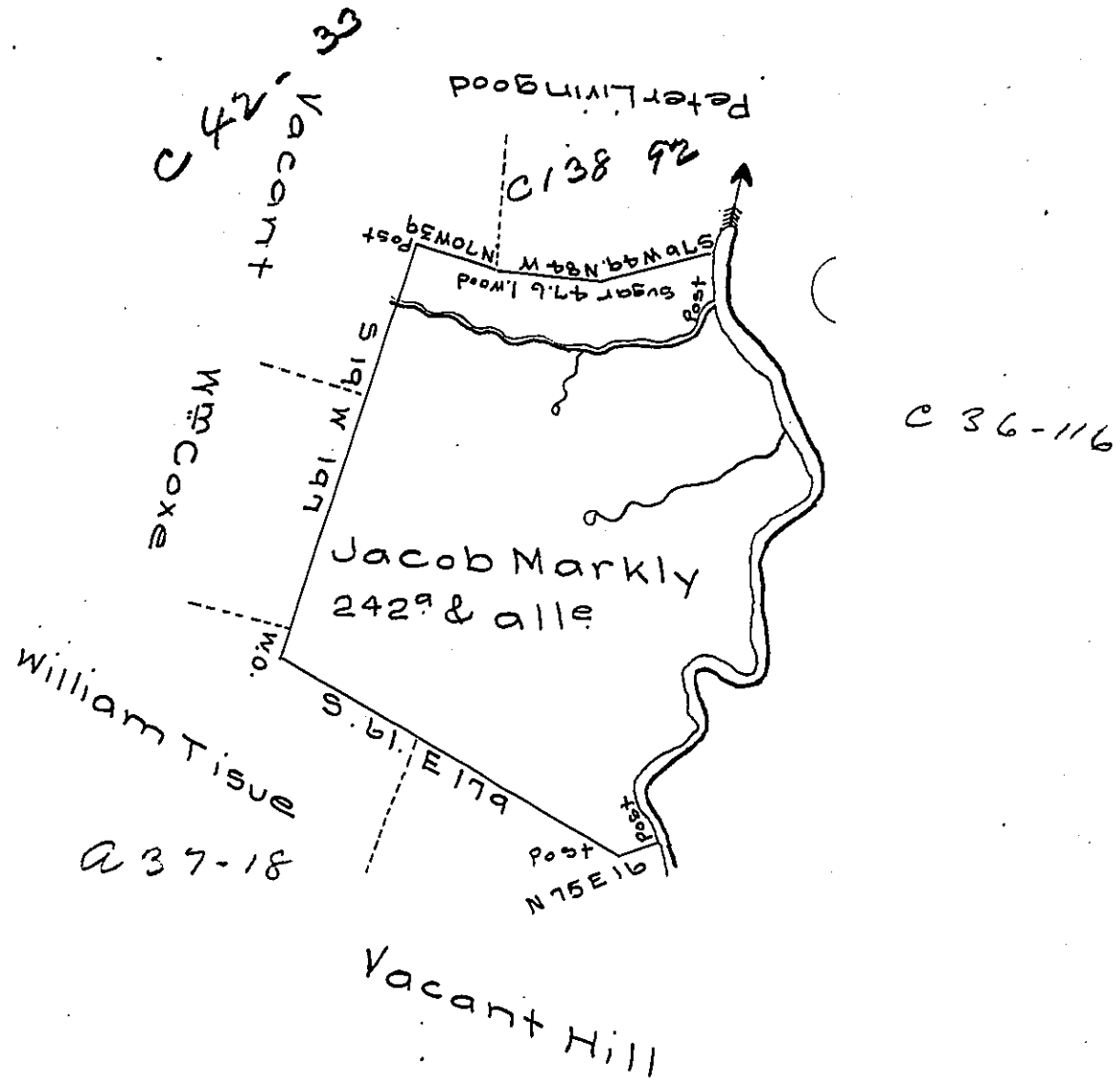


Courses and distances down the river -

- N 22 W 28
- N 27 E 21.4
- N 65 E 17.4
- N 20 W 21
- N 33 E 14.8
- S 76 E 26
- N 7 E 68
- N 57 E 21
- N 21 W 52
- N 37 W 40.5
- North 24
- 334.1



Situated on the North West side of Little Yough river including the mouth of the Tub-Mill Run in Elk Lick Township Bedford County, and surveyed the 13<sup>th</sup>. day of November 1790 in pursuance of a warrant dated the 15<sup>th</sup>. of October 1790.

Dan! Brodhead S. Gen!      & Alexander M<sup>c</sup>Clean  
Deputy

*IN TESTIMONY* that the above is a copy of the original remaining on file in the Department of Internal Affairs of Pennsylvania, made conformably to an Act of Assembly approved the 16th day of February, 1833, I have hereunto set my Hand and caused the Seal of said Department to be affixed at Harrisburg, this eighth day of December 1905

*Francis B. ...*  
Secretary of Internal Affairs.